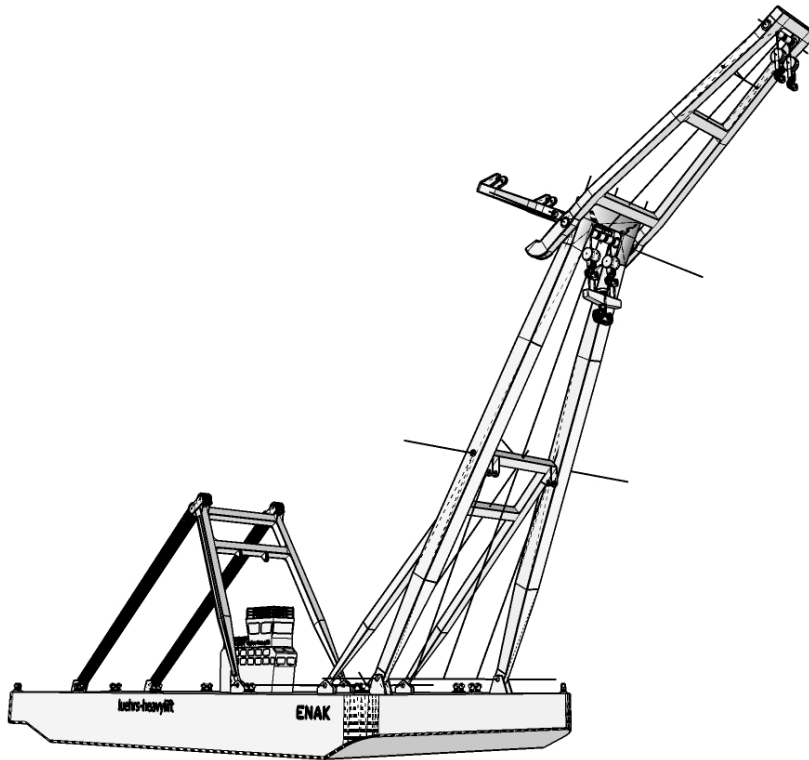




Sheerleg “ENAK”

600 t lifting capacity



General	Built	1967 GHH Blexen, Germany	
	Registered	Hamburg, Germany	
	Flag	Germany	
	Classification	DNV GL + 100 A5 Salvage crane M + MC	
	GRT	1701	
	NRT	510	
	Accommodation	14	
Dimensions	Length o.a.:	55,25 m	
	Breadth:	25,00 m	
	Depth:	4,60 m	
	Draft:	2,50 m	
Technical	Main Engine	1 x Caterpillar	772 KW
	Auxiliaries	3 x MAN	777 KW ttl.
		1 x Deutz	32 KW
	Propulsion	3 x Schottel Rudderpropeller	
Lifting Capacity	A- Frame	2 x 300 t at 7,0 – 13,2 m outreach 32,0 – 29,5 m hoisting height	
	Jib Hoist	2 x 170 t at 12,8 – 30,0 m outreach 51,0 – 40,5 m hoisting height	